

# TeSys™ Programmer

## Firmware Update Utility for LTMR and LTMCU

### Instruction Bulletin

TeSys offers innovative and connected solutions for motor starters.

8536IB1915R12/19  
Release date 12/2019



[www.schneider-electric.com](http://www.schneider-electric.com)

**Schneider**  
Electric™



RSPSupply - 1-888-532-2706 - <https://www.RSPSupply.com>  
See the product details here

# Legal Information

The Schneider Electric brand and any trademarks of Schneider Electric SE and its subsidiaries referred to in this guide are the property of Schneider Electric SE or its subsidiaries. All other brands may be trademarks of their respective owners.

This guide and its content are protected under applicable copyright laws and furnished for informational use only. No part of this guide may be reproduced or transmitted in any form or by any means (electronic, mechanical, photocopying, recording, or otherwise), for any purpose, without the prior written permission of Schneider Electric.

Schneider Electric does not grant any right or license for commercial use of the guide or its content, except for a non-exclusive and personal license to consult it on an "as is" basis. Schneider Electric products and equipment should be installed, operated, serviced, and maintained only by qualified personnel.

As standards, specifications, and designs change from time to time, information contained in this guide may be subject to change without notice.

To the extent permitted by applicable law, no responsibility or liability is assumed by Schneider Electric and its subsidiaries for any errors or omissions in the informational content of this material or consequences arising out of or resulting from the use of the information contained herein.

Schneider Electric and TeSys are trademarks and the property of Schneider Electric SE, its subsidiaries, and affiliated companies. All other trademarks are the property of their respective owners.

# Table of Contents

Document Scope .....	5
Safety Information.....	6
TeSys Programmer with LTMR: Modbus RTU, CANopen, DeviceNet and Profibus .....	7
Introduction and Setup .....	7
Prepare your PC: Connection through USB to Serial .....	8
Using TeSys Programmer Tool .....	9
TeSys Programmer with LTMR: Ethernet TCP/IP .....	14
Introduction and Setup .....	14
Prepare your PC.....	15
Connection through USB to Serial .....	15
Connection through Ethernet .....	16
Using TeSys Programmer .....	21
TeSys Programmer with LTMCU / LTMCUF / LTMCUC .....	26
Introduction and Setup .....	26
Prepare your PC: Connection through USB to Serial .....	27
Using TeSys Programmer .....	28
Advanced Settings.....	33
Logging and Reporting.....	33
Reporting .....	33
Logging.....	33
Optimized Mode (default).....	33
Overwrite Mode.....	33
Backup and Restore Feature.....	34



**RSPSupply - 1-888-532-2706 - <https://www.RSPSupply.com>**  
See the product details here

## Document Scope

This User Manual describes how to upgrade / downgrade TeSys T product range (LTMR and LTMCU) firmware using the TeSys Programmer.

- *TeSys Programmer with LTMR: Modbus RTU, CANopen, DeviceNet and Profibus*, page 7 describes how to use the TeSys Programmer with the following TeSys T communication versions: **Modbus RTU, CANopen, DeviceNet and Profibus**.
- *TeSys Programmer with LTMR: Ethernet TCP/IP*, page 14 describes how to use the TeSys Programmer with the following TeSys T communication versions: **Modbus TCP, Ethernet IP**.
- *TeSys Programmer with LTMCU / LTMCUF / LTMUC*, page 26 describes how to use the TeSys Programmer with LTMCU, LTMUC and LTMCUF.
- *Advanced Settings*, page 33 describes the new features and settings found in the Advanced Settings tab.

# Safety Information

**NOTE:** Read these instructions carefully, and look at the equipment to become familiar with the device before trying to install, operate, or maintain it.

## **⚠ DANGER**

### **HAZARD OF ELECTRIC SHOCK, EXPLOSION, OR ARC FLASH**

- Apply appropriate personal protective equipment (PPE) and follow safe electrical work practices. See NFPA 70E or CSA Z462.
- This equipment must only be installed and serviced by qualified electrical personnel.
- Turn off all power supplying this equipment before working on or inside equipment.
- Always use a properly rated voltage sensing device to confirm power is off.
- Replace all devices, doors and covers before turning on power to this equipment.

**Failure to follow these instructions will result in death or serious injury.**

## **⚠ WARNING**

### **UNINTENDED EQUIPMENT OPERATION**

- The application of this product requires expertise in the design and programming of controls systems. Only persons with such expertise should be allowed to program and apply this product.
- Follow all local and national safety codes and standards.

**Failure to follow these instructions can result in death, serious injury, or equipment damage.**

## **NOTICE**

### **RISK OF FIRMWARE CORRUPTION**

Updating the firmware on TeSys T through the programmer provides an automatic restore function for the product configurations. It is recommended that a backup of the product configurations should be saved through the TeSys T Device Type Manager (DTM) using SoMove Software. Once programming has begun, adhere to the following until the programming process is complete:

- Close all other programs before starting programming
- Do not close TeSys Programmer until the process is complete.
- Do not interrupt power to device.
- Do not disconnect the communication cable if programming is in progress.
- Remove all network cables except direct connections to this PC.

**Failure to follow these instructions can result in equipment damage.**

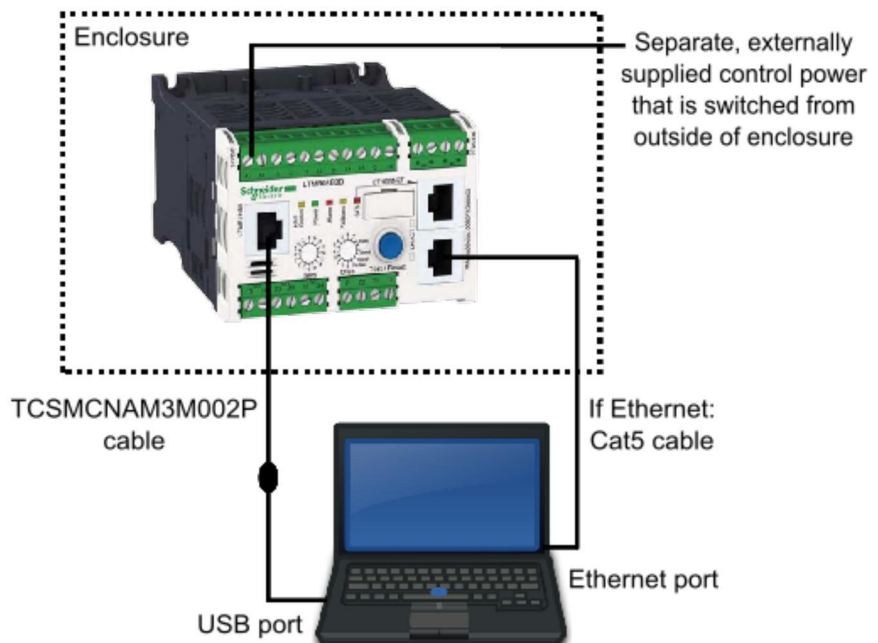
# TeSys Programmer with LTMR: Modbus RTU, CANopen, DeviceNet and Profibus

## Introduction and Setup

The current chapter describes how to upgrade / downgrade a TeSys T firmware version for **LTMRxxMxx** (Modbus), **LTMRxxCxx** (CANopen), **LTMRxxDxx** (DeviceNet) or **LTMRxxPxx** (Profibus). It explains how to prepare the LTMR and the PC, how to connect them and how to run the programmer.

One physical link shall be established between your PC and the LTMR, from a USB port of the PC to the "LTME/HMI" port on the left side of the front face of the LTMR unit, as in *Figure 1, page 7*. To do so, use the TCSMCNAM3M002P cable. Route the cable to the outside of the enclosure so the update can be performed without exposure to energized equipment (doors closed and interlocked). The Ethernet version of Tesys T requires a Cat 5 cable.

Figure 1 -



**NOTE:** It is recommended to make a direct link. Do not include the LTMCU or LTME in the link between the PC and the LTMR.

Use a separate, externally supplied control power connection that is switched from outside of the enclosure. The control voltage supply must match the LTMR input voltage. With the power OFF, connect power to the "A1, A2" terminals of the LTMR (input polarity is indicated for DC models). Route the cable to the outside of the enclosure so the update can be performed without exposure to energized equipment (doors closed and interlocked).

## Prepare your PC: Connection through USB to Serial

1. Download and install BOTH “SoMove v2.6” or greater and “Tesys DTM Library v2.10.0” or greater.
2. Unzip and Run SoMove executable file
  - NOTE:** This will also install the Modbus Driver Suite for cable TCSMCNAM3M002P.
3. Unzip and Run the TeSys DTM Library executable file
  - NOTE:** file may run with no pop-up windows
4. Identify the USB COM port used by the TCSMCNAM3M002P.

To do so, connect the cable at both ends, click the Start menu on your PC and search for “Device Manager”, as in *Figure 2, page 8*. Open the Device Manager, then, click on Ports (Com & LPT) and read the number of the port “TSX C USB 485”: In the example below, it is **COM12**, as in *Figure 3, page 8*.

Figure 2 -

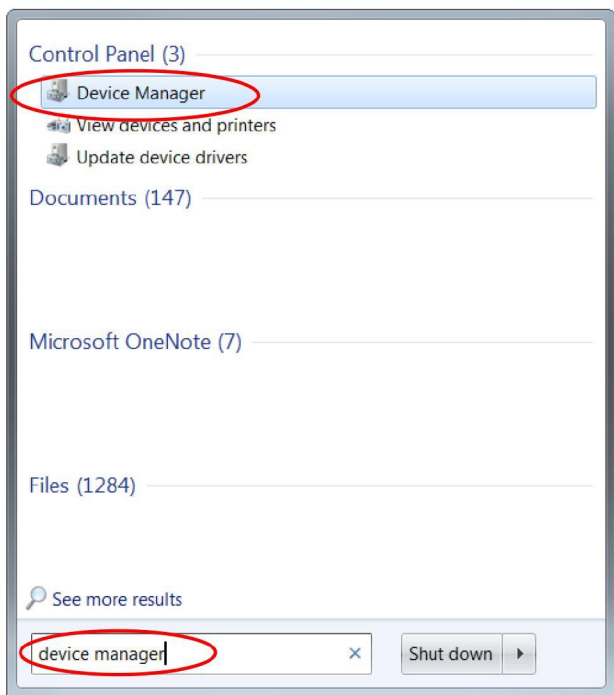
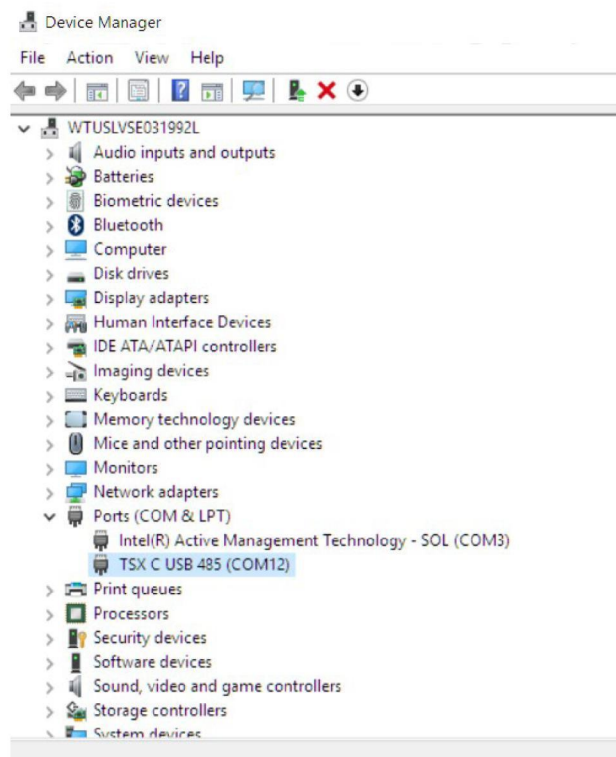


Figure 3 -





## Using TeSys Programmer Tool

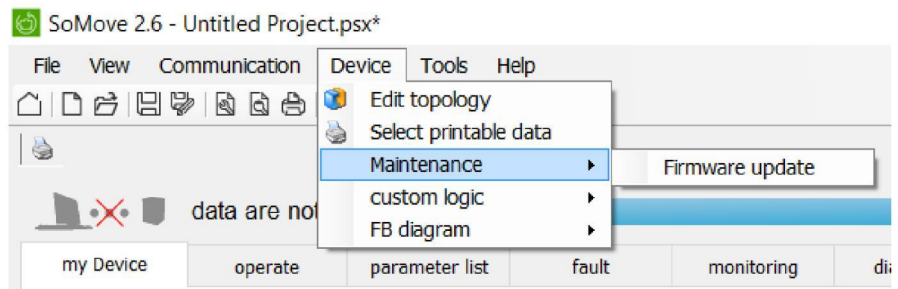
**IMPORTANT:** Changing the firmware version of the TeSys T through the programmer provides an automatic restore function for the product configurations. It is recommended before changing the firmware version that a backup of the product configurations should be saved through the TeSys T Device Type Manager (DTM) using SoMove Software. The programmer can be used for both firmware upgrades and firmware downgrades. The example below is an example of downgrading the firmware from FW2.6 to FW2.5.

1. Open the TeSys Programmer Tool from one of the following locations:
  - a. Navigate to “C:\Program Files (x86)\Common Files\Schneider Electric Shared\TeSysDTMLibrary\TeSysT\TeSysProgrammer” and run “TeSysProgTool.exe”
  - b. In SoMove:
    - (1) Click on “Disconnect from Device” icon



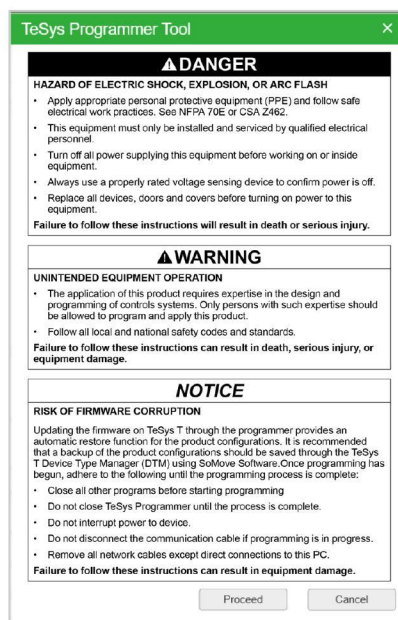
on the “Main” toolbar

- (2) Choose “Firmware Update” from “Device → Maintenance”, as in the figure below.



A warning message is displayed, as in *Figure 4, page 9*, stating that the TeSys Programmer is to be used for TeSys T firmware change (upgrading to a new version or downgrading to a former version) and not for setting the configuration parameters of the TeSys T. If “Cancel” is selected, then the programmer exits.

Figure 4 -



- From the pull-down menu located underneath the Tesys T graphic, as in *Figure 5, page 10*, select the COM port for the “TSX C USB 485”. In this example, it is COM 12. Click on the “Connect” button to connect to the Tesys T. Once connected, the “Connected Device Info” fields will populate, as in *Figure 6, page 10*.

Figure 5 -

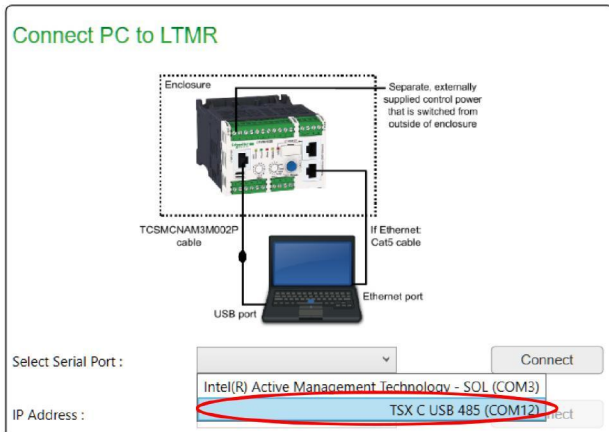


Figure 6 -



- In the “Firmware Package Selection” field, click the “Change Path” button, as in *Figure 7, page 10*, and navigate to the directory of unzipped Tesys T firmware files, as in *Figure 8, page 10*. Select the corresponding firmware package from the “Select Firmware” drop down in *Figure 9, page 11*. Verify that the correct version has appeared in the Device FW Version field, as in *Figure 10, page 11*.

Figure 7 -



Figure 8 -

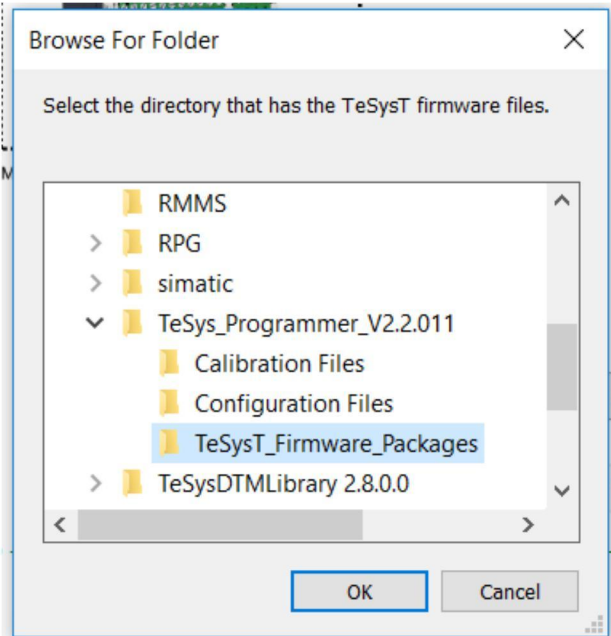


Figure 9 -

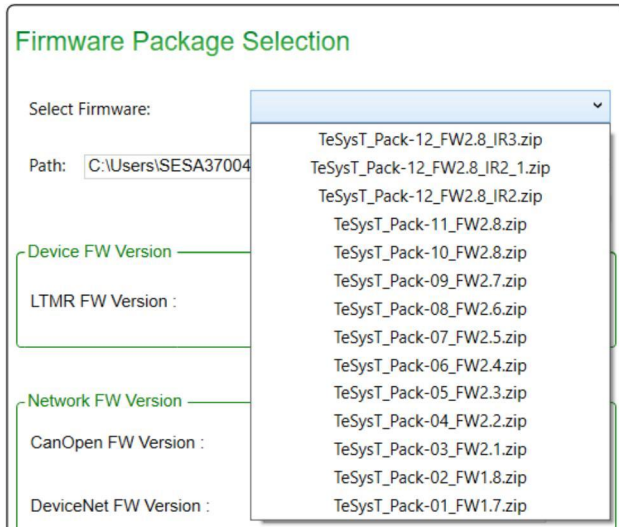
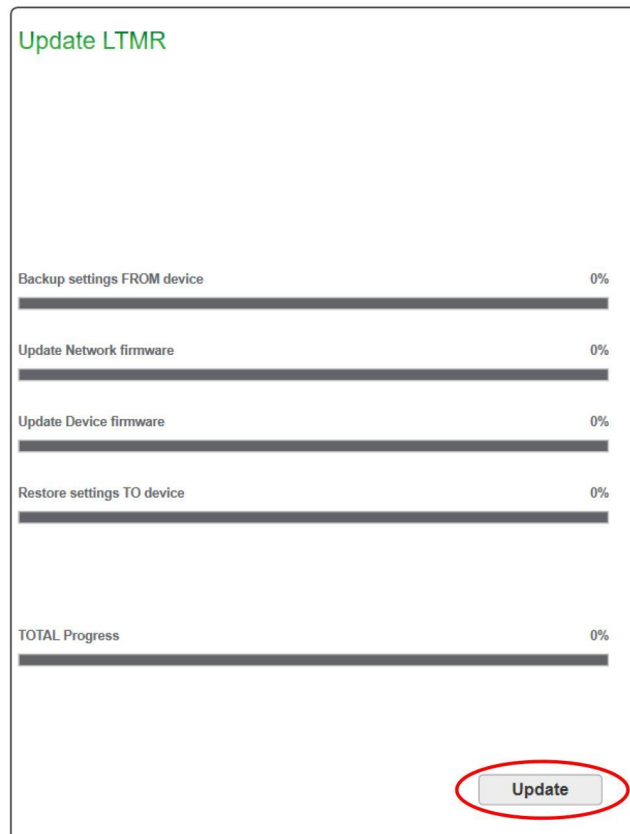


Figure 10 -

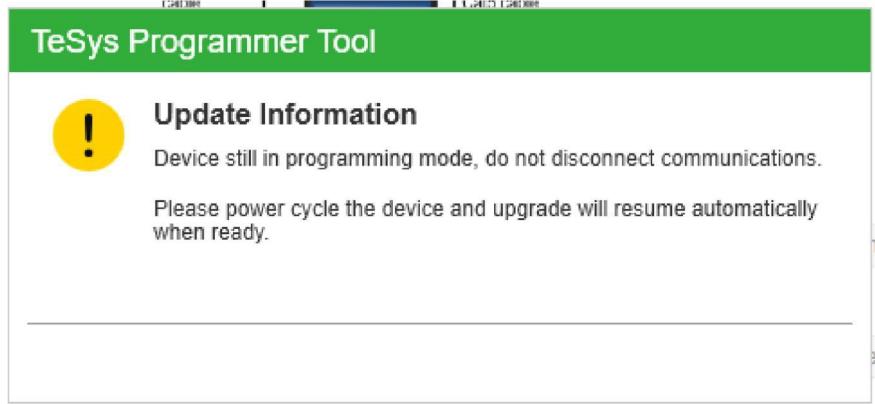


4. You are now ready to upgrade the Tesys T. To begin the firmware upgrade, click the "Update" button, as in the below figure.



**IMPORTANT:** Once the firmware upgrade has begun, DO NOT DISCONNECT THE DEVICE. Doing this can corrupt the hardware. Firmware upgrade can take up to 10 minutes.

- A pop-up window, as in the below figure, will appear, requesting a to power cycle the LTMR.

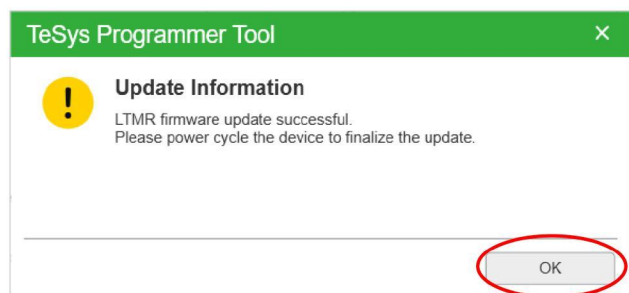


- Once the "Total Progress" bar reaches 100%, as per *Figure 11, page 12*, a pop-up window will appear, indicating successful LTMR Firmware Upgradation, as per *Figure 12, page 12*. At this time, Press "OK", power-cycle the device again and wait 20 seconds. Then, click the "Connect" button.

Figure 11 -

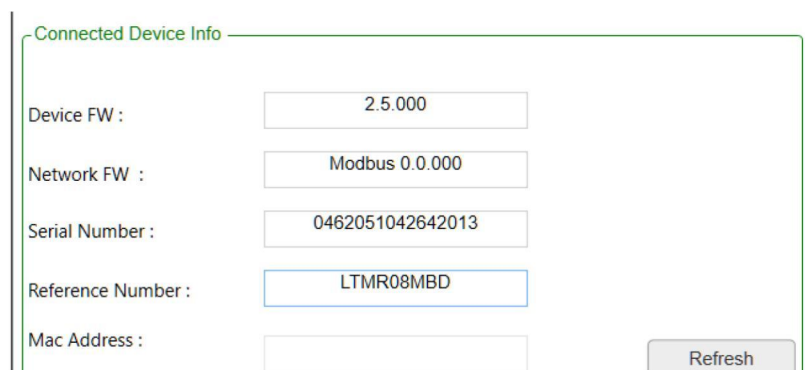


Figure 12 -



- After clicking the "Connect", the new firmware version should populate as shown in the below figure.

Figure 13 -



8. The FW update is finished and you can exit the TeSys Programmer or continue using the tool.

**NOTE:** If you access your TeSys T through a LTMCU, depending on the firmware upgrade performed on TeSys T, you may have to update the language files of your TeSys T.

If this occurs, and languages files in LTMCU are not updated, the LTMCU displays "**Error in languages**" when connected to TeSys T.

It is nevertheless possible to operate **temporarily** both the TeSys T and the LTMCU, but the new TeSys T configuration parameters introduced by the new TeSys T FW version will not be accessible. It is recommended to update the LTMCU languages as soon as possible. To do so, use the LanDown tool and refer to the *LTMCU User Manual*.

LTMCU language file update may be necessary when LTMR is upgraded based on the following compatibility rules as follows:

- LTMR FW version 2.5 or 2.6
  - LTMCU language version must be 1.200 or higher.
- LTMR FW version 2.7 or higher
  - LTMCU language version must be 1.300.

# TeSys Programmer with LTMR: Ethernet TCP/IP

## Introduction and Setup

The current chapter describes how to upgrade / downgrade a TeSys T LTMR Ethernet TCP/IP firmware version.

It is applicable to TeSys T with **LTMRxxExx** references.

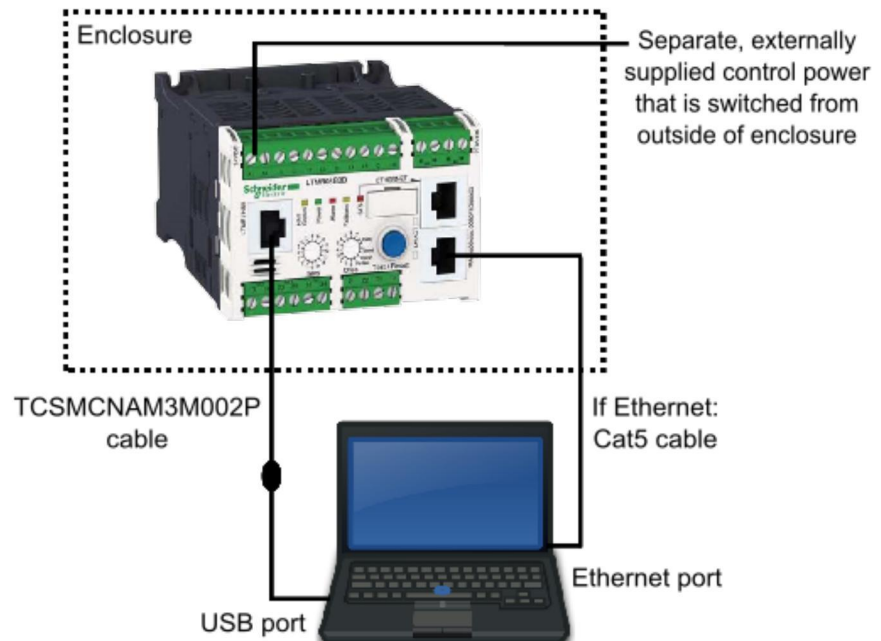
It explains how to prepare the LTMR and the PC, how to connect them and how to run the programmer.

Two physical links shall be established between your PC and the LTMR, as per *Figure 14, page 14*.

One is a serial link from an USB port of the PC to the "LTME/HMI" port on the left side of the front face of the LTMR unit. It uses the *TCSMCNAM3M002P* cable.

The second link is from the Ethernet port of your PC to any of the Ethernet ports of the LTMR, using one Cat5 Ethernet cable. Route the cable to the outside of the enclosure so the update can be performed without exposure to energized equipment (doors closed and interlocked).

**Figure 14 -**



## Prepare your PC

### Connection through USB to Serial

1. Download and install BOTH “SoMove v2.6” or greater and “Tesys DTM Library v2.10.0” or greater.
2. Unzip and Run the SoMove executable file.  
**NOTE:** This will also install the Modbus Driver Suite for cable TCSCMCNAM3M002P.
3. Unzip and Run the TeSys DTM Library executable file (**Note:** file may run with no pop-up windows)
4. Identify the USB COM port used by the *TCSCMCNAM3M002P*. To do so, connect the cable at both ends, click the Start menu on your PC and search for “Device Manager”, as in *Figure 15, page 15*. Open the Device Manager, then, click on Ports (Com & LPT) and read the number of the port “TSX C USB 485”: In the example below, it is **COM12**, as in *Figure 16, page 15*.

Figure 15 -

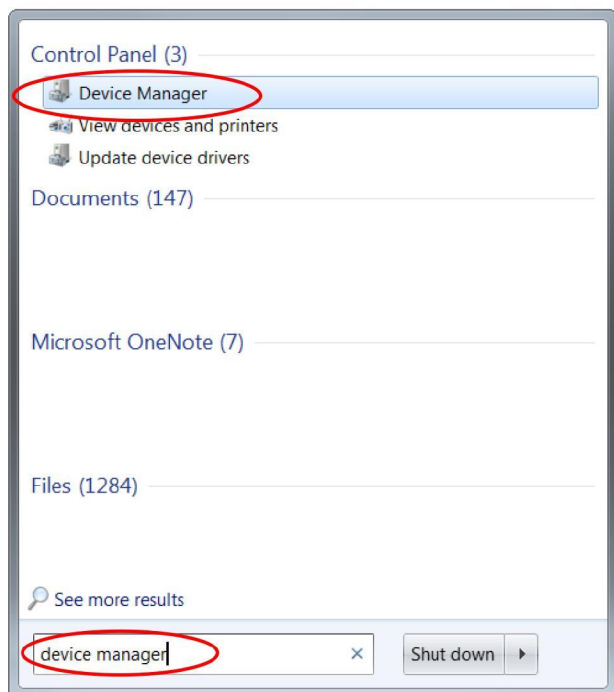
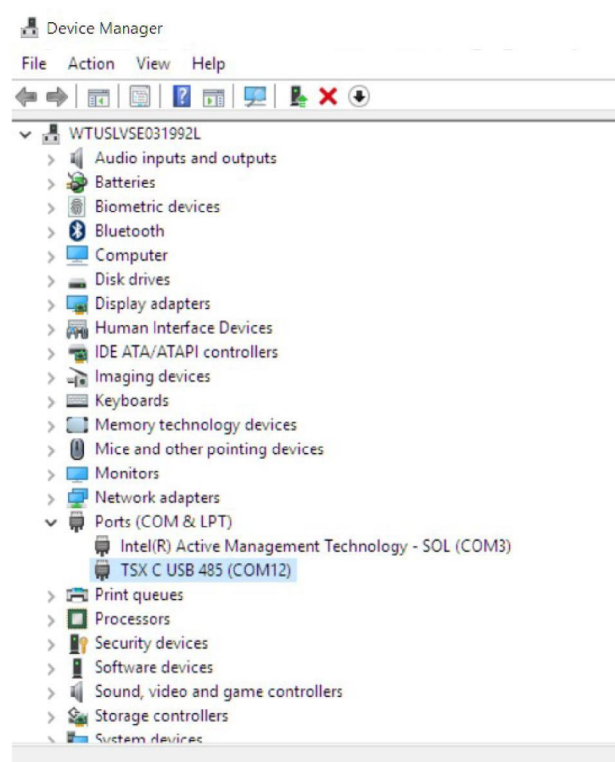


Figure 16 -



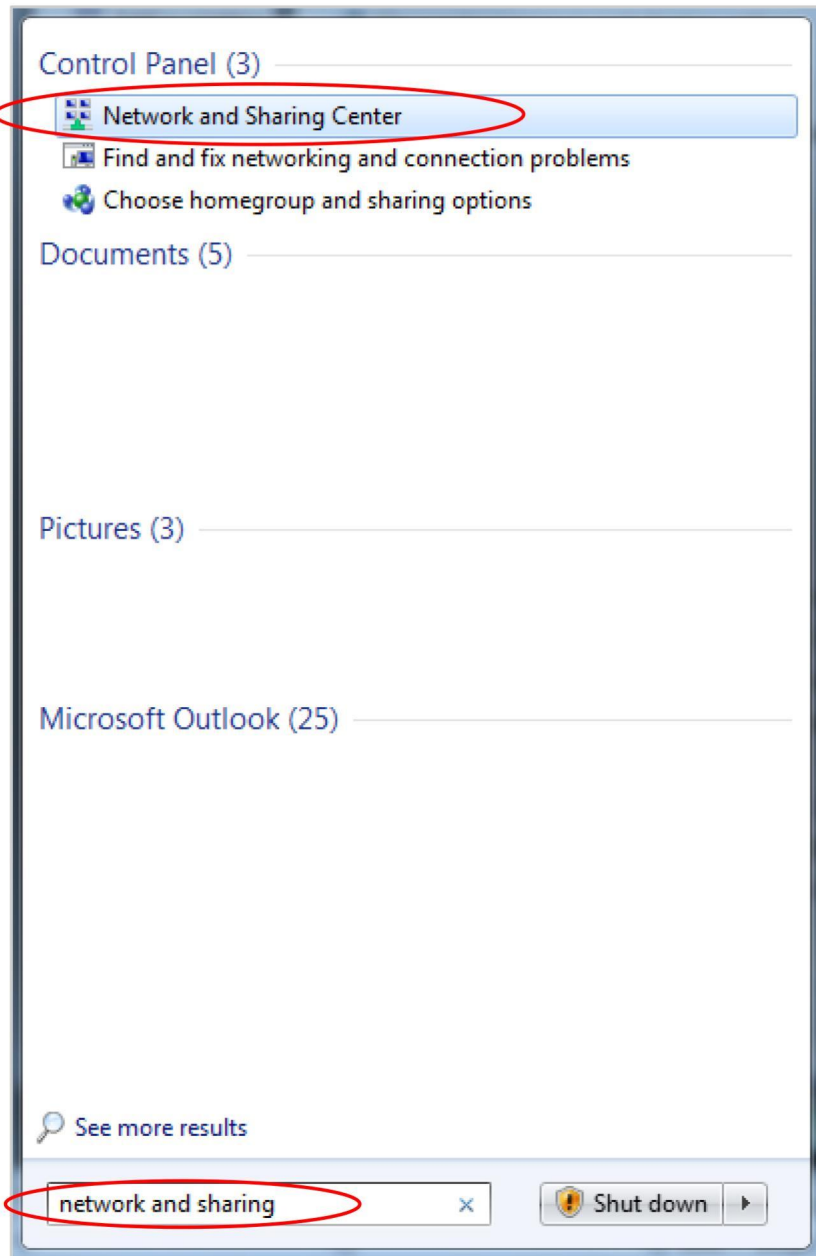
## Connection through Ethernet

You must configure a fixed IP address on your PC. In the first step, during the software upgrade of the LTMR, the LTMR will use its **default** IP address; then, in a second step, it will use the address **192.168.16.1**.

For each of these two LTMR addresses, it is mandatory to define in your PC a compatible IP address. This means that the PC and Tesys T must be in the same Ethernet sub network.

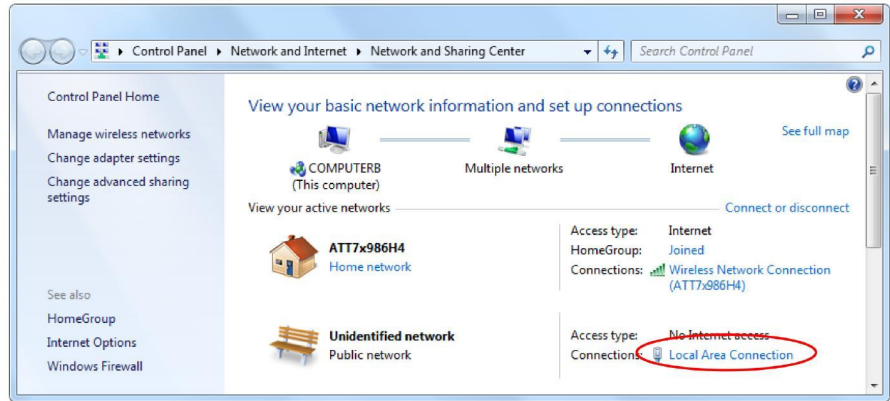
To configure these fixed IP addresses in your PC:

1. Connect the Ethernet cable as shown in the diagram on *Figure 14, page 7*.
2. From the Start Menu of your PC, search for the words "Network and Sharing", then select "Network and Sharing Center" as per the below figure.

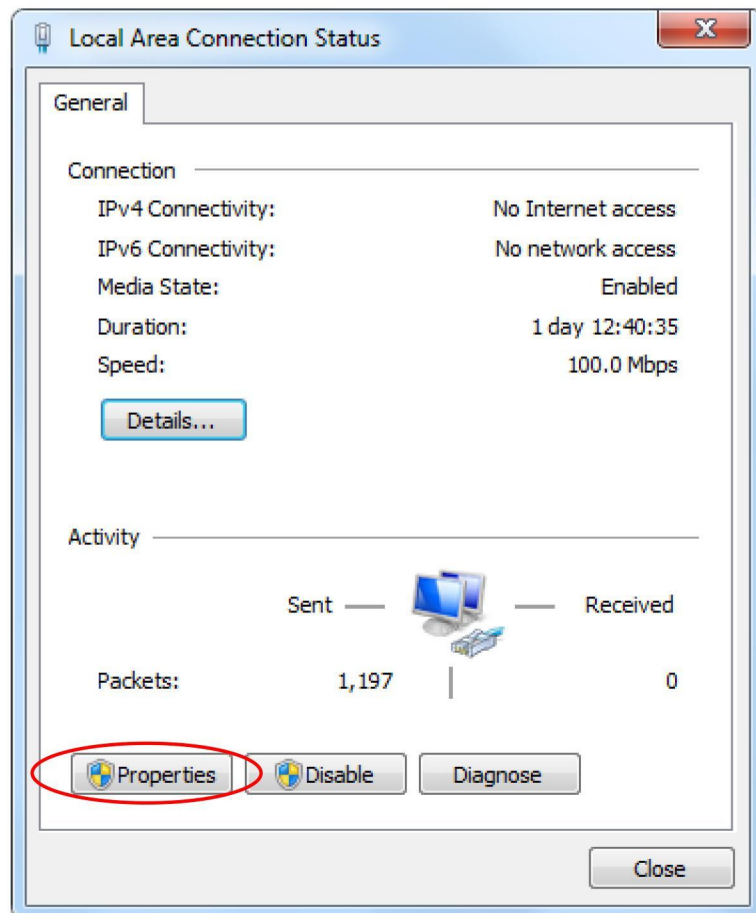




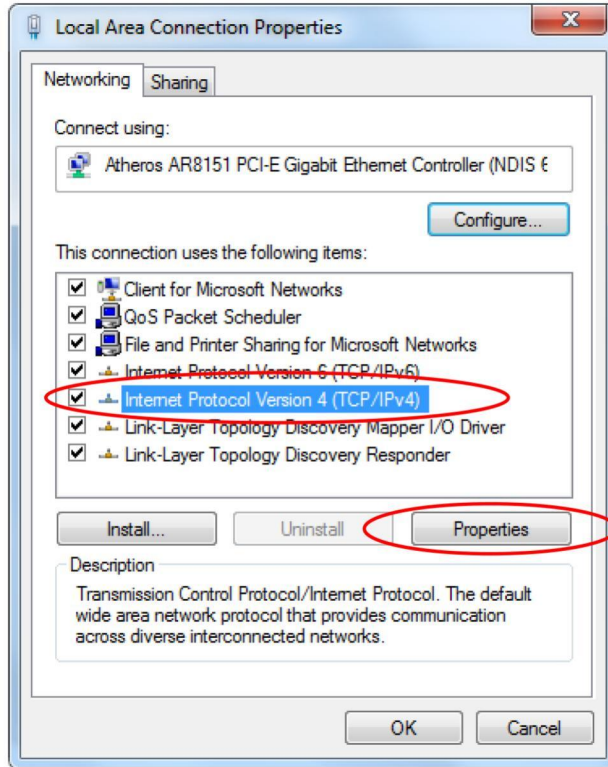
3. Click on Local Area Connection to which the LTMR is connected, as in the below figure.



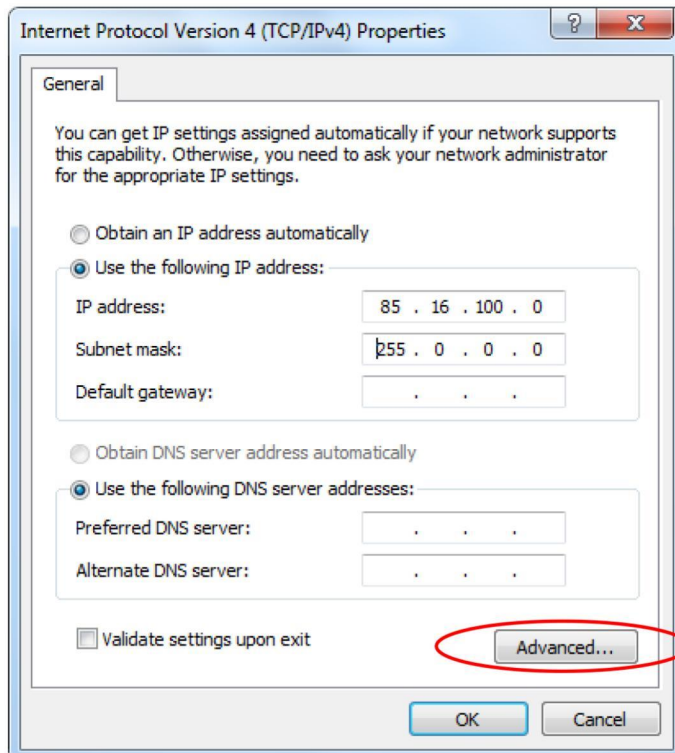
4. On the next window, click on "Properties", as in the below figure.



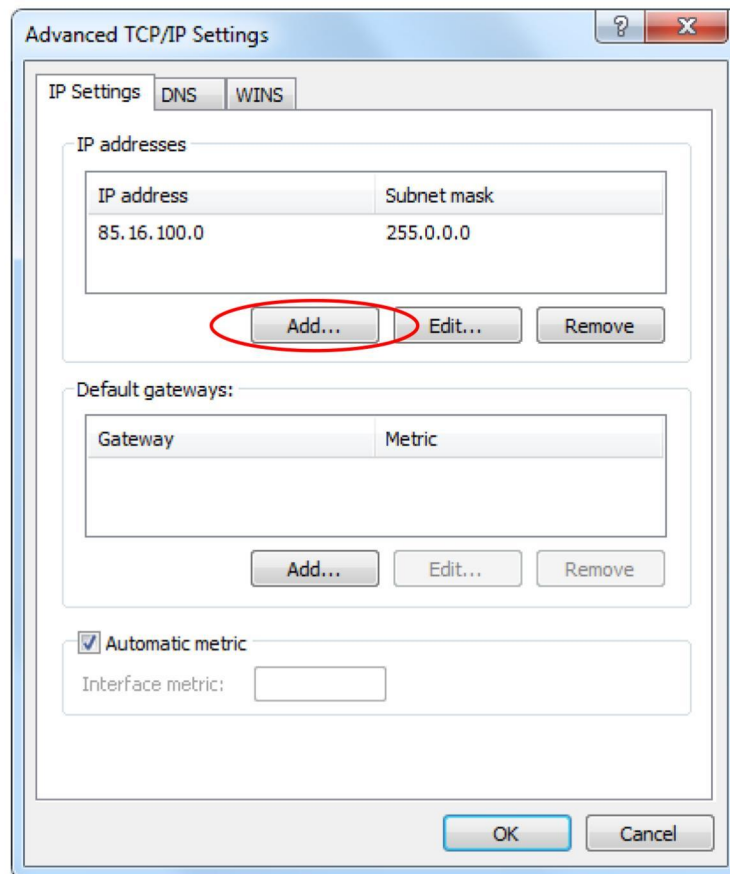
5. On the next window, select "Internet Protocol Version 4 (TCP/IPv4)" and click on "Properties", as in the below figure.



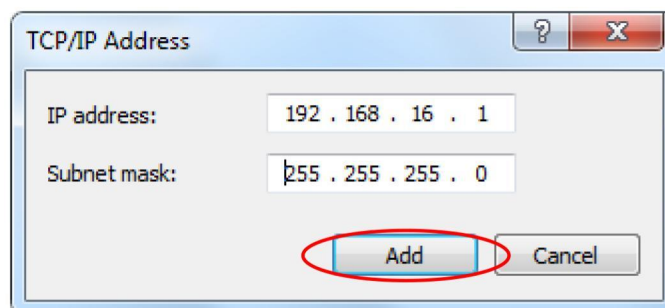
6. On the next window, select "Use the following IP address". Enter **85.16.100.0** as IP address and **255.0.0.0** as subnet mask. Then, to define a **second** IP address for the PC, click on "Advanced", as in the below figure.



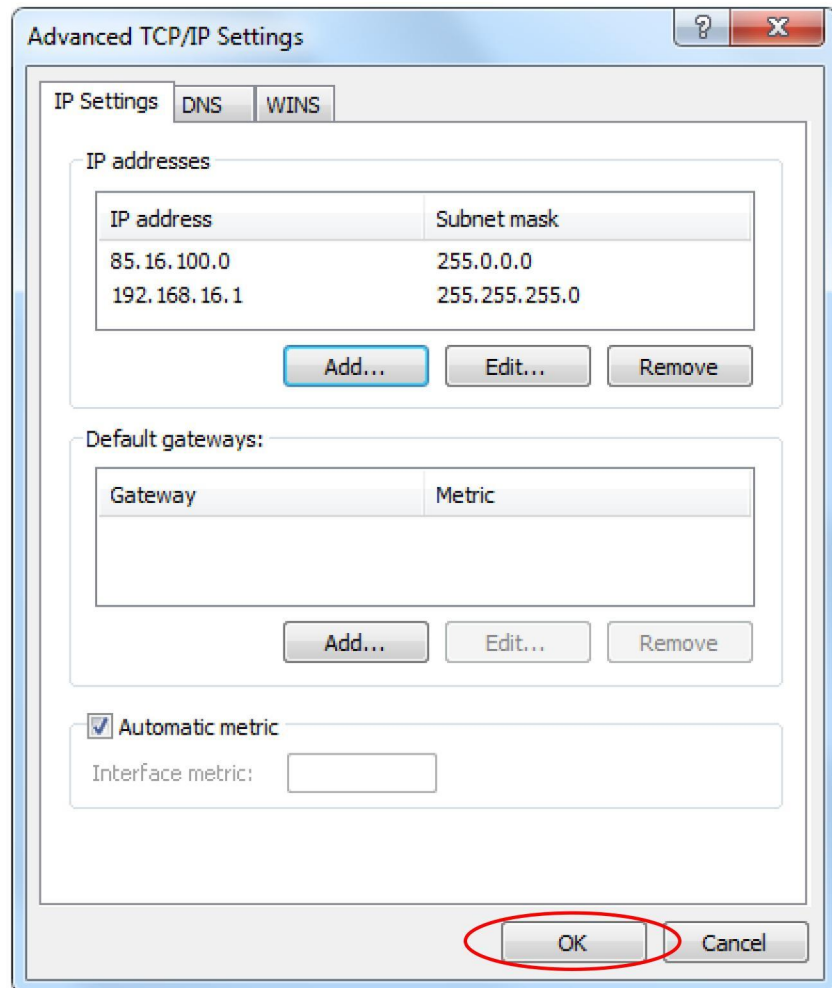
7. Then, on the next window, click “Add”, as in the below figure.



8. Now, enter the second IP address, **192.168.16.1** and click on “Add”. The subnet mask **255.255.255.0** is automatically selected and you a window, as in the below figure.


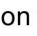


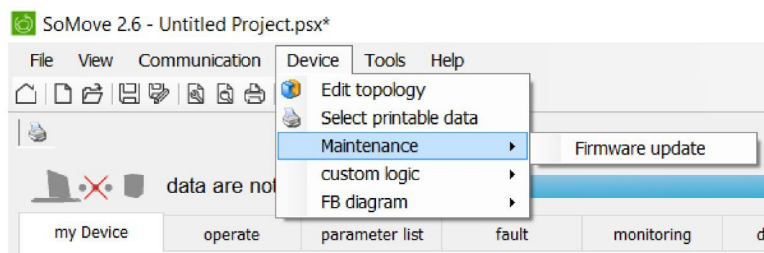
- Both IP addresses for the PC are now registered, and you can exit the previous IP addressing windows by pressing "OK".



## Using TeSys Programmer

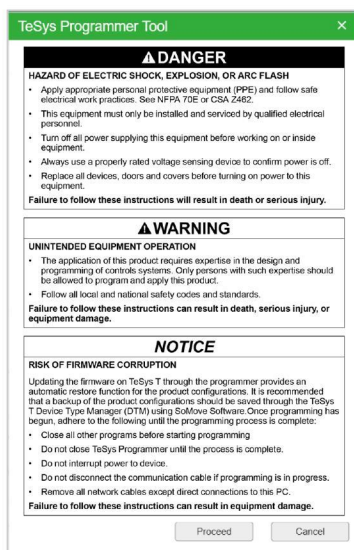
**IMPORTANT:** Changing the firmware version of the TeSys T through the programmer provides an automatic restore function for the product configurations. It is recommended before changing the firmware version that a backup of the product configurations should be saved through the TeSys T Device Type Manager (DTM) using SoMove Software. The programmer can be used for both firmware upgrades and firmware downgrades. The example below is an example of upgrading the firmware from FW2.6 to FW2.7.

1. Run the tool “TeSysProgTool.exe” from the following locations:
  - a. Navigate to “C:\Program Files (x86)\Common Files\Schneider Electric Shared\TeSysDTMLibrary\TeSysT\TeSysProgrammer” and run “TeSysProgTool.exe”
  - b. In SoMove:
    - (1) Open an 
    - (2) Click on “Disconnect from Device” icon  on the “Main” toolbar
    - (3) Choose “Firmware Update” from “Device → Maintenance”, as in the figure below.



A warning message is displayed, as in *Figure 17, page 21*, stating that the TeSys Programmer is to be used for TeSys T firmware change (upgrading to a new version or downgrading to a former version) and not for setting the configuration parameters of the TeSys T. If “Cancel” is selected, then the programmer exits.

Figure 17 -



- From the pull-down menu located underneath the Tesys T graphic, as in *Figure 18, page 22*, select the COM port for the "TSX C USB 485". In this example, it is COM 12. Click on the "Connect" button to connect to the Tesys T. Once connected, the "Connected Device Info" fields will populate, as in *Figure 19, page 22*.

Figure 18 -

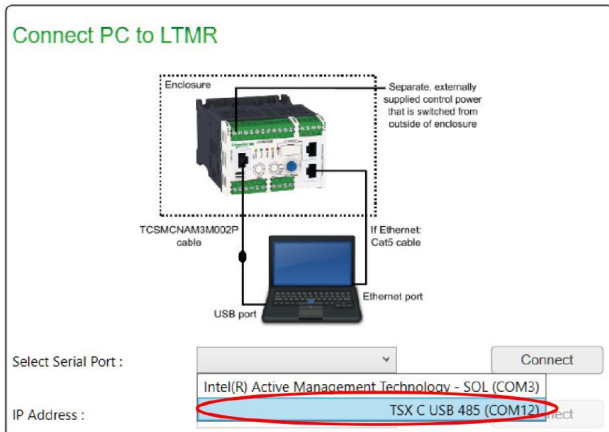
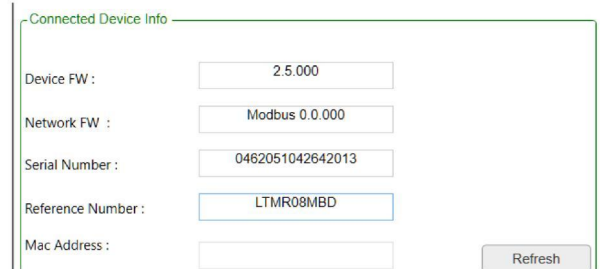
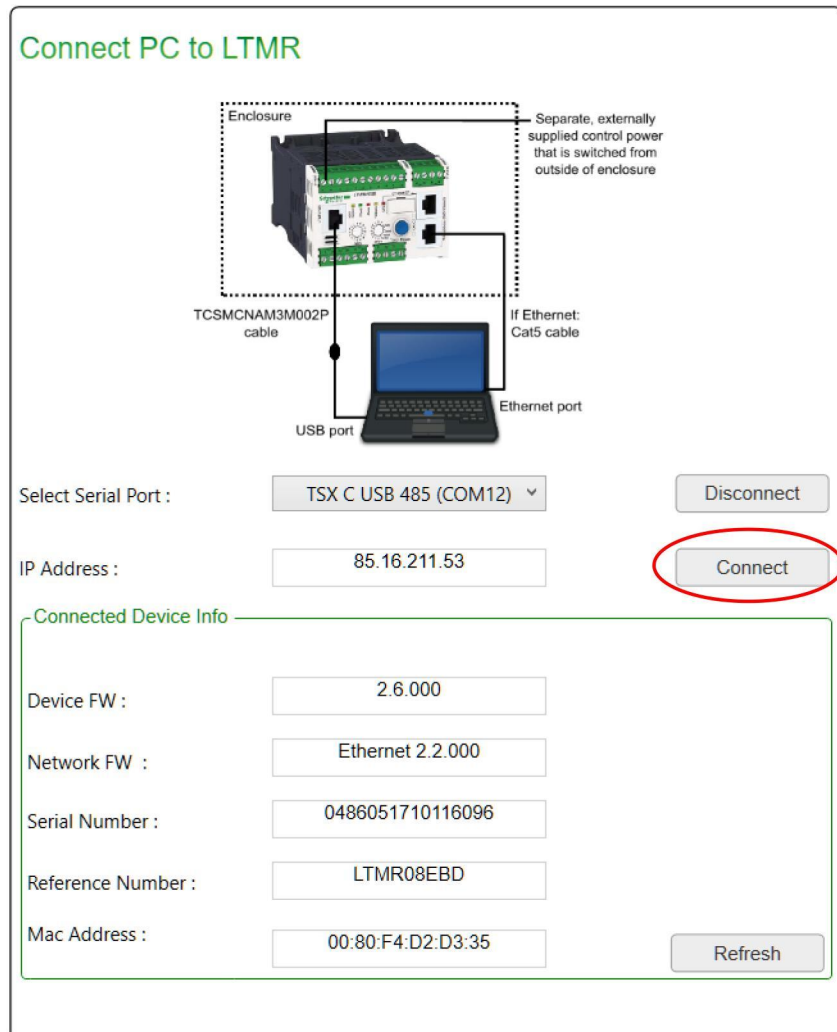


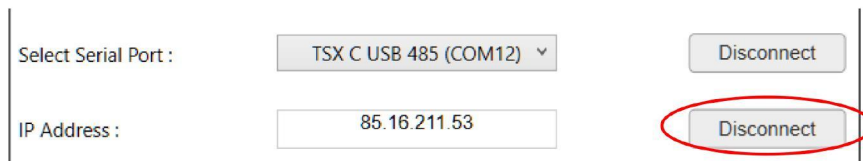
Figure 19 -



- Once the USB connection is established, the Programmer will import the default "IP Address" and the "Connected Device Info" from the Tesys T as seen below. Click the "Connect" button beside the IP Address to connect to the device through the Ethernet Port, as in the below figure.



- 4. Once successfully connected through the Ethernet port, the button to the right of the IP address will read, "Disconnect" (giving you the option to now disconnect if desired), as in the below figure.



- 5. In the "Firmware Package Selection" field, click the "Change Path" button, as in Figure 20, page 23, and navigate to the directory of unzipped Tesys T firmware files, as in Figure 21, page 23. Select the corresponding firmware package from the "Select Firmware" drop down in Figure 22, page 23, and verify that the correct version has appeared in the Device FW Version field, as in Figure 23, page 23.

Figure 20 -

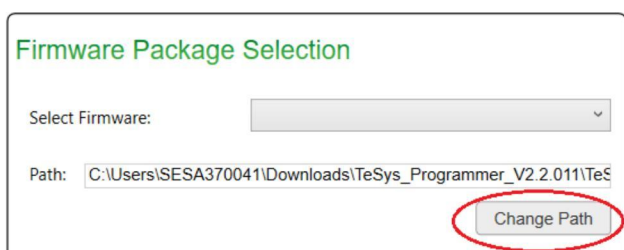


Figure 21 -

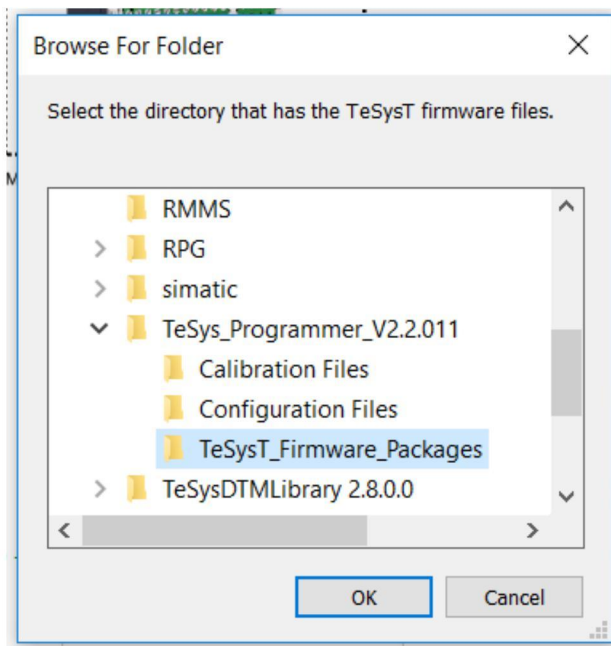


Figure 22 -

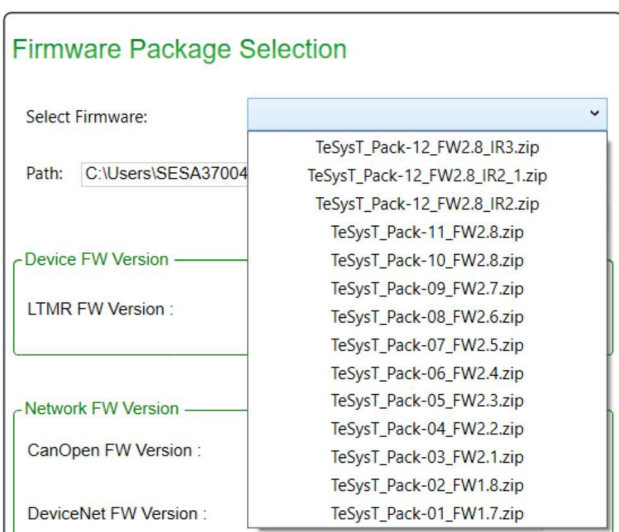
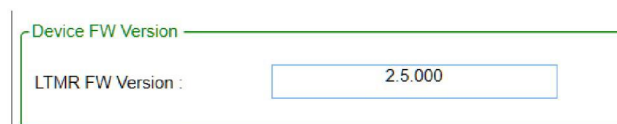
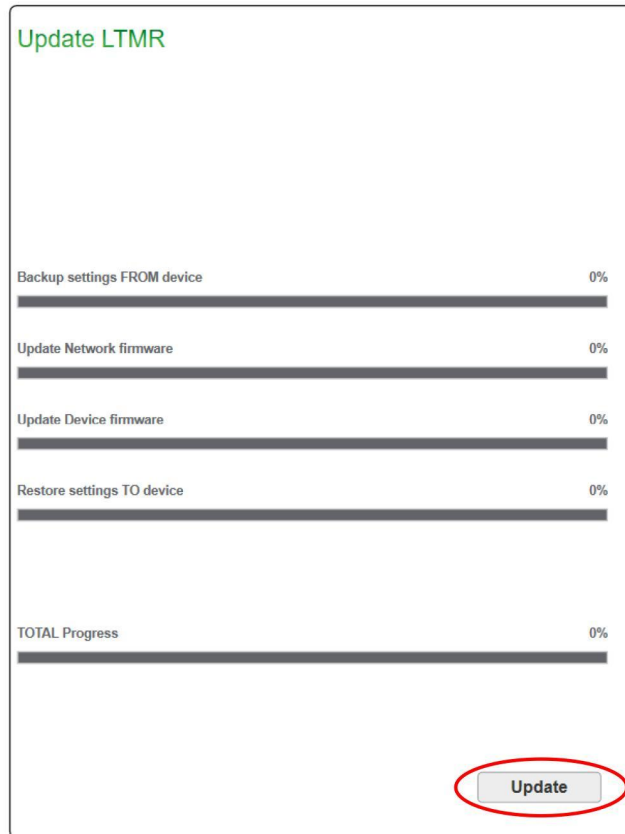


Figure 23 -



6. You are now ready to upgrade the Tesys T. To begin the firmware upgrade, click the “Update” button, as in the below figure.



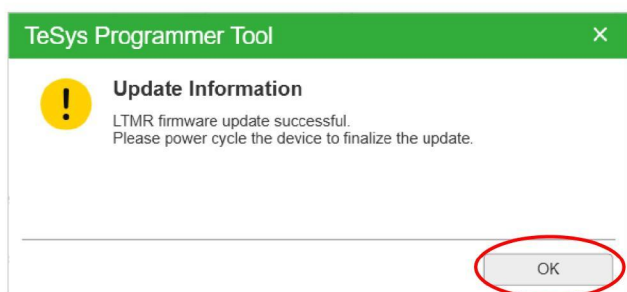
**IMPORTANT:** Once the firmware upgrade has begun, DO NOT DISCONNECT THE DEVICE. Doing this can corrupt the hardware. Please allow up to 10 minutes for the firmware upgrade to finish.

7. Once the “Total Progress” bar reaches 100%, as per *Figure 24, page 23*, a pop-up window will appear, indicating successful LTMR Firmware Upgradation, as per *Figure 25, page 23*. At this time, Press “OK”, power-cycle the device again and wait 20 seconds. Then, click the “Connect” button.

Figure 24 -

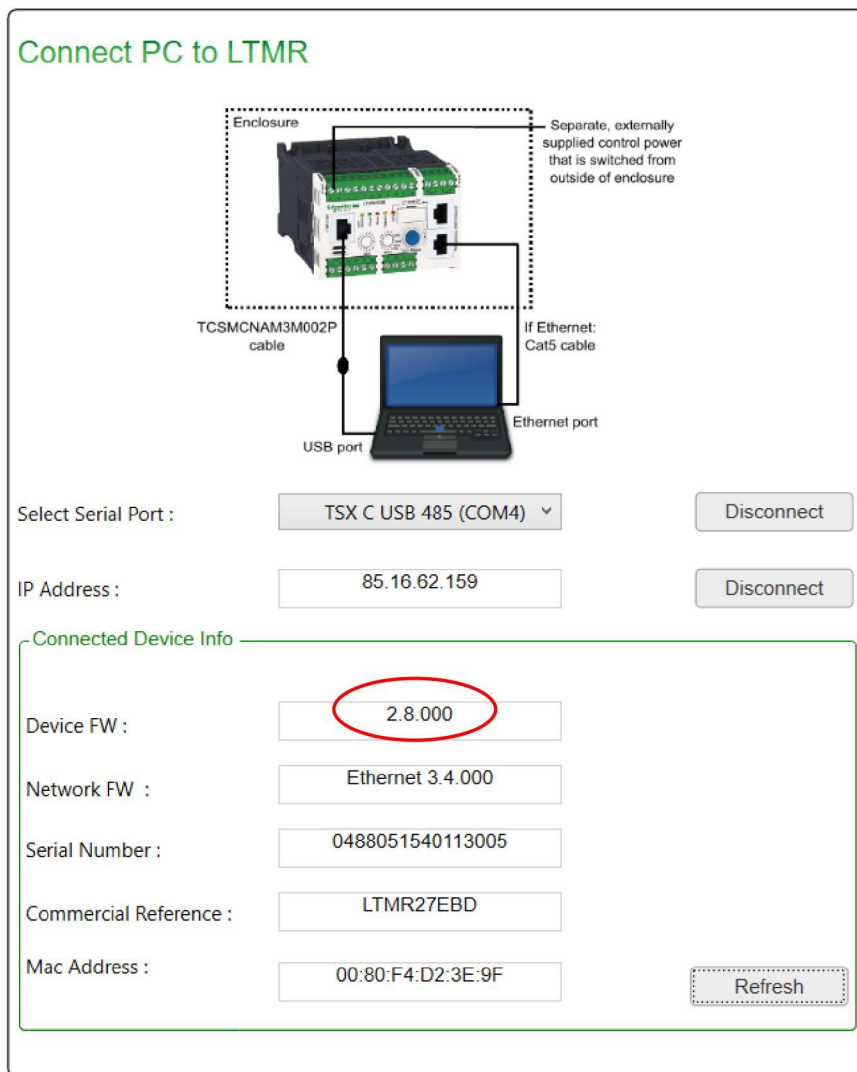


Figure 25 -





- After clicking the "Connect" button, the new firmware version should populate as shown below.



- The FW update is finished and you can exit the TeSys Programmer or continue using the tool.

**NOTE:** If you access your TeSys T through a LTMCU, depending on the firmware upgrade performed on TeSys T, you may have to update the language files of your TeSys T.

If this occurs, and languages files in LTMCU are not updated, the LTMCU displays "Error in languages" when connected to TeSys T.

- It is nevertheless possible to operate **temporarily** both the TeSys T and the LTMCU, but the new TeSys T configuration parameters introduced by the new TeSys T FW version will not be accessible. Proceed as soon as possible to the LTMCU languages update. To do so, use the Landown software and refer to the *LTMCU User Manual*. LTMCU language file update may be necessary when LTMR is upgraded based on the following compatibility rules as follows:

11.

- LTMR FW version 2.5 or 2.6
  - LTMCU language version must be 1.200 or higher.
- LTMR FW version 2.7 or higher
  - LTMCU language version must be 1.300.

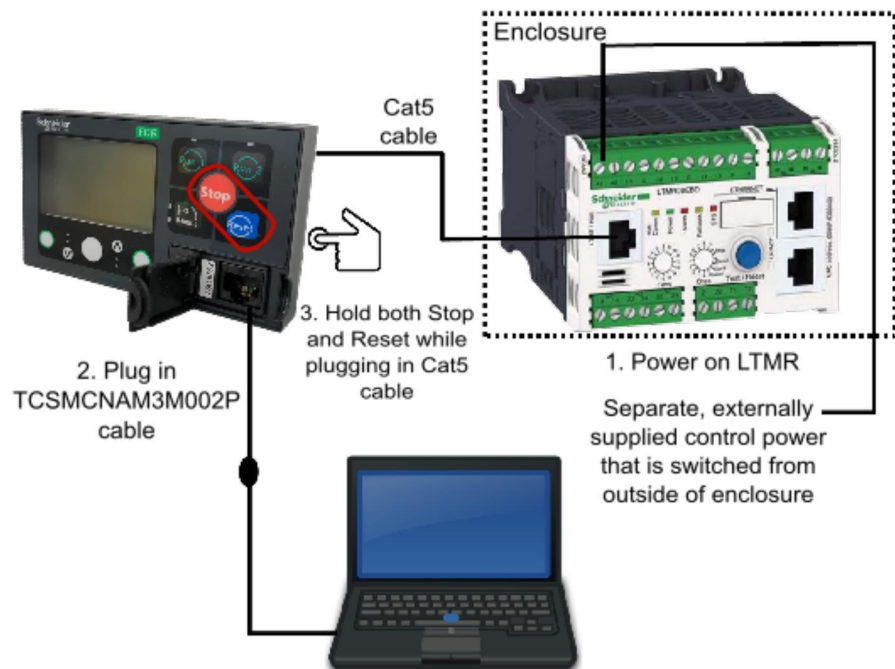
# TeSys Programmer with LTMCU / LTMCUF / LTMCUUC

## Introduction and Setup

Chapter 3 describes how to upgrade / downgrade the LTMCU firmware, not the Language Files. It explains how to prepare the LTMCU and the PC, how to connect them and how to start the programmer.

**NOTE:** The firmware update procedure is the same for the LTMCU, LTMCUF, and LTMCUUC so will be referred to as simply LTMCU throughout this manual.

A physical link shall be established between your PC and the LTMCU and from your LTMCU to the Tesys T, as in the below figure. First, power on your Tesys T from a separate, externally supplied control power source that is switched from outside the enclosure. Secondly, connect the TCSMCNAM3M002P cable from a USB port of the PC to the RJ45 connector port on the front face of the LTMCU. Thirdly, connect the free end of the Cat5 cable to the "LTMCU/HMI" port on the left side of the Tesys T, then, while pressing both the "STOP" and "RESET" buttons (circled in red below) on the LTMCU, insert one end of the Cat5 cable into the rear RJ45 port of the LTMCU. Route the cables to the outside of the enclosure so the update can be performed without exposure to energized equipment (doors closed and interlocked).



**NOTE:** When connected properly, an hourglass will appear on the screen of the LTMCU. It is recommended to make a direct link between the Tesys T and LTMCU with the Cat5 cable. Do not include the LTME in the link between the Tesys T and LTMCU.

Use a separate, externally supplied control power connection that is switched from outside of the enclosure. The control voltage supply must match the LTMR input voltage. With the power OFF, connect power to the "A1, A2" terminals of the LTMR (input polarity is indicated for DC models). Route the cable to the outside of the enclosure so the update can be performed without exposure to energized equipment (doors closed and interlocked).

## Prepare your PC: Connection through USB to Serial

1. Download and install BOTH “SoMove v2.6” or greater and “TeSys DTM Library v2.10.0” or greater.
2. Unzip and Run SoMove executable file.  
**NOTE:** This will also install the Modbus Driver Suite for cable TCSMCNAM3M002P.
3. Unzip and Run the “TeSys DTM Library executable file  
**NOTE:** File may run with no pop-up windows.
4. Identify the USB COM port used by the TCSMCNAM3M002P. To do so, connect the cable at both ends, click the Start menu on your PC and search for “Device Manager”, as in *Figure 26, page 27*. Open the Device Manager, then, click on Ports (Com & LPT) and read the number of the port “TSX C USB 485”: In the example below, it is **COM12**, as in *Figure 27, page 27*.

Figure 26 -

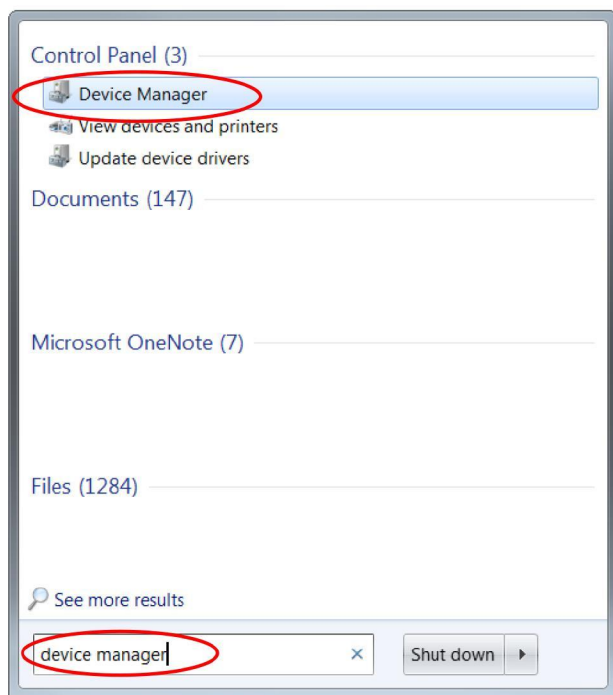
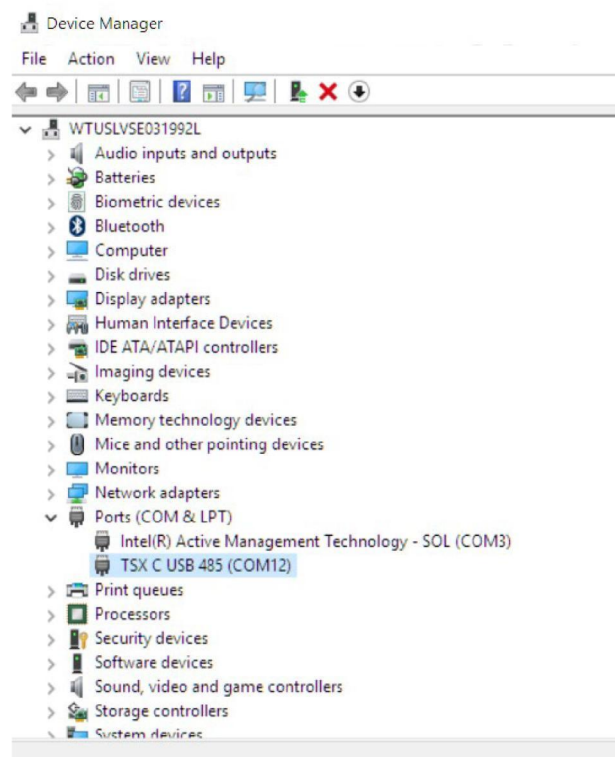


Figure 27 -



## Using TeSys Programmer

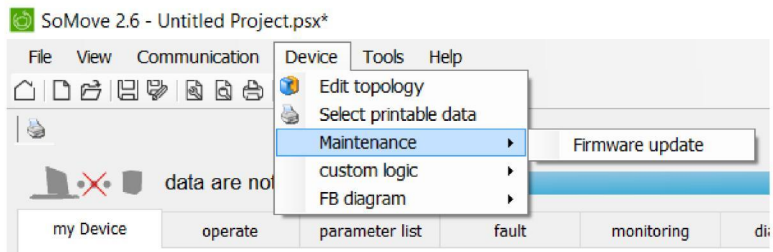
The programmer can be used for both firmware upgrades and firmware downgrades. The example below is an example of upgrading the firmware to FW v3.0.

1. Run the tool “TeSysProgTool.exe” from the following locations:
  - a. Navigate to “C:\Program Files (x86)\Common Files\Schneider Electric Shared\TeSysDTMLibrary\TeSysT\TeSysProgrammer” and run “TeSysProgTool.exe”
  - b. In SoMove:
    - (1) Click on “Disconnect from Device” icon

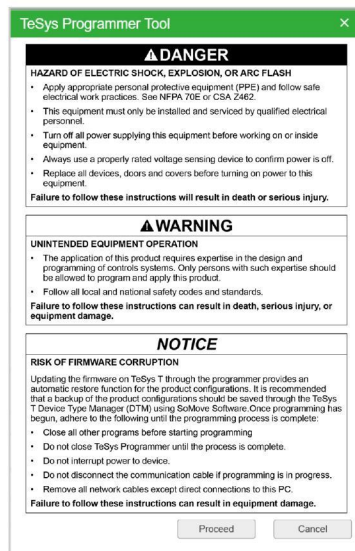


on the “Main” toolbar

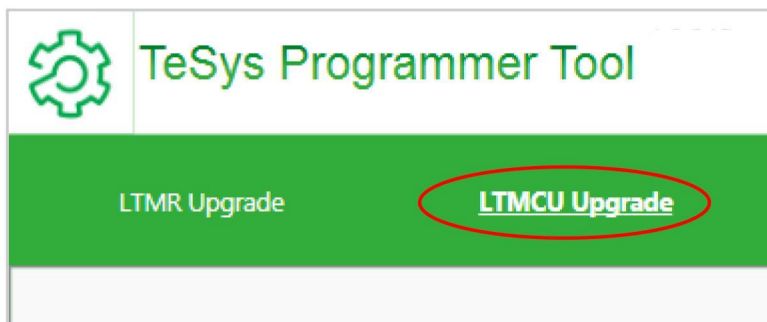
- (2) Choose “Firmware Update” from “Device → Maintenance”, as in the figure below.



A warning message is displayed, as in the below figure, stating that the TeSys T Programmer is to be used for TeSys T firmware change (upgrading to a new version or downgrading to a former version) and not for setting the configuration parameters of the TeSys T. If “Cancel” is selected, then the programmer exits.



- 2. From the home screen, click on "LTMCU Upgrade" in the upper-left corner of the screen as seen below.



- 3. In the "Firmware Package Selection" field, click on the "Browse" button, *Figure 28, page 29*, and navigate to the unzipped LTMCU firmware file, *Figure 29, page 29*, that will be put onto the device. The FW version will populate in the "LTMCU FW Version:" field, *Figure 30, page 29*.

Figure 28 -

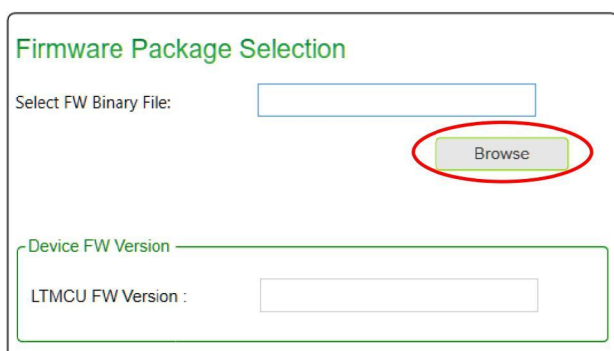


Figure 29 -

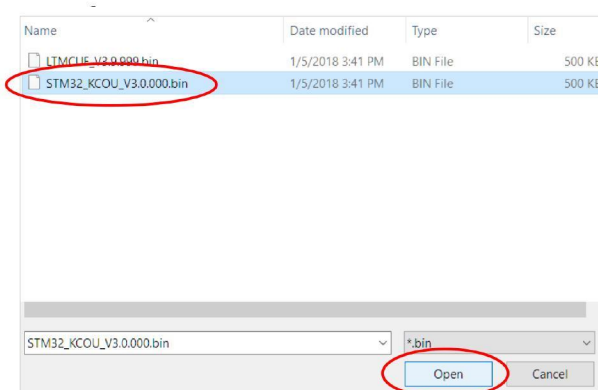


Figure 30 -



- From the the pull-down menu located underneath the Tesys T graphic, *Figure 31, page 30*, select the COM port for the "TSX C USB 485". In this example, it is COM 12. Click on the "Connect" button to connect to the Tesys T. A prompt will appear as in *Figure 32, page 30*. Refer to *Item 3 Connecting PC to LTMR, page 22* for more detailed instructions on how to complete the connection. If the prompt is followed and closed, the "Connected Device Info" field will populate, as in *Figure 33, page 30*.

Figure 31 -

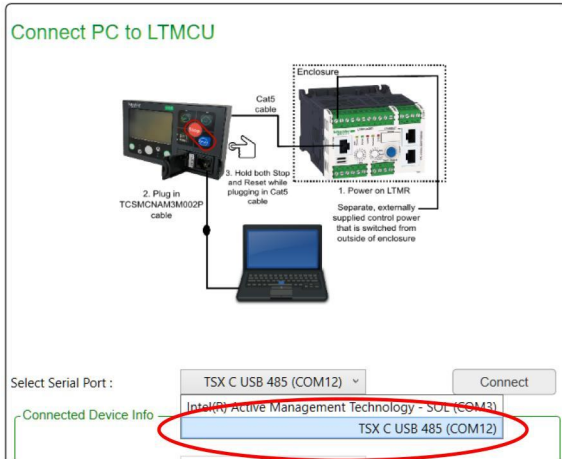


Figure 32 -

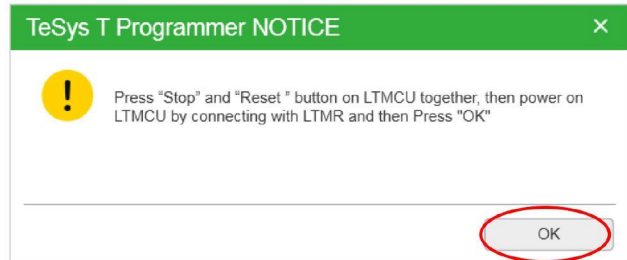
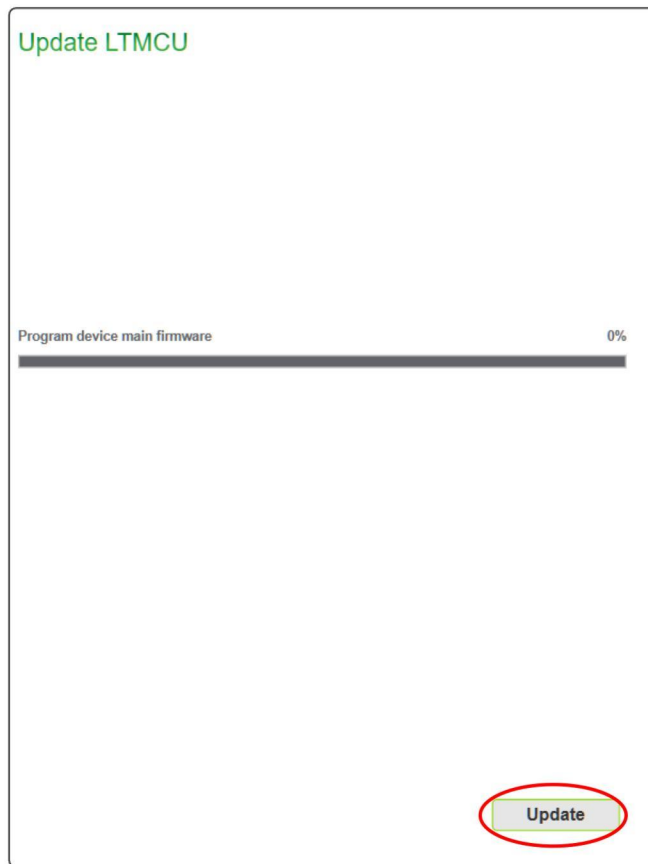


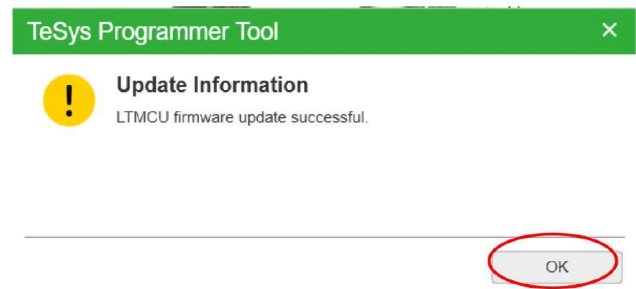
Figure 33 -



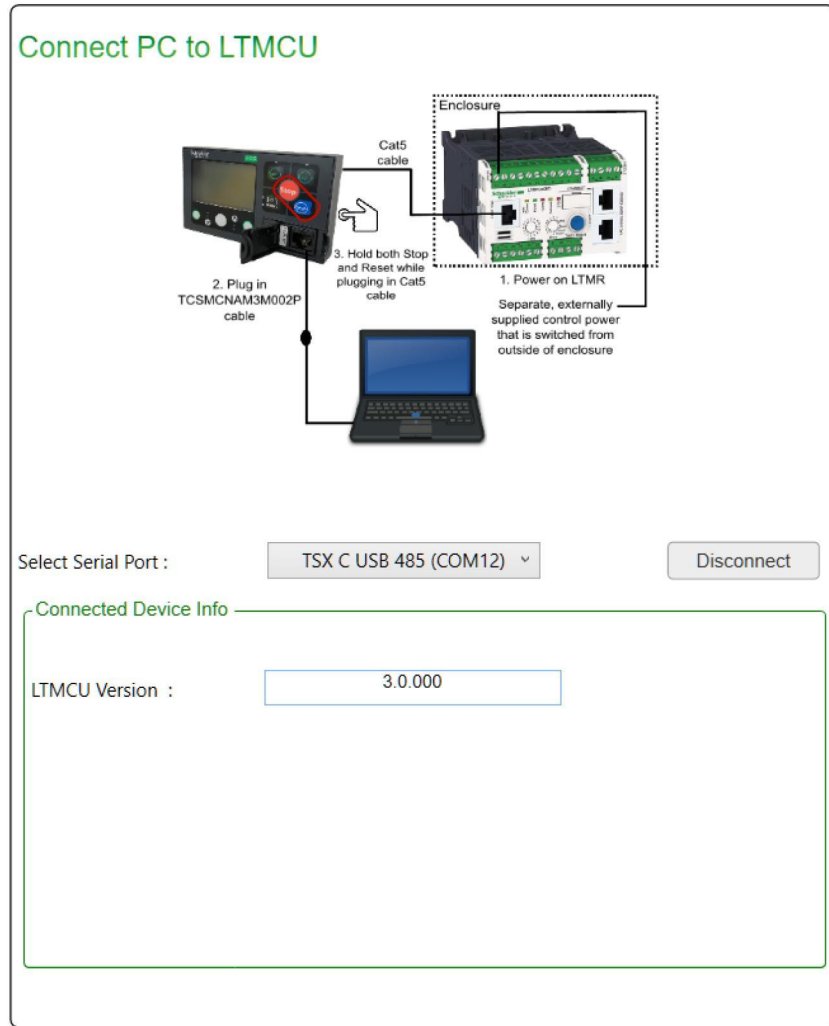
- 5. You are now ready to update the LTMCU. To begin the firmware update, click the "Update" button. **IMPORTANT:** Once the firmware update has begun, DO NOT DISCONNECT THE DEVICE. Doing this can corrupt the hardware.



- 6. When the "Total Progress" bar reaches 100%, a pop-up window will appear stating that the "LTMCU firmware upgrade successful". Click the "OK" button.



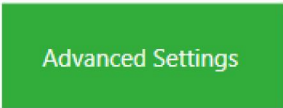
- 7. The updated firmware version will now appear in the "Connected Device Info" field.



- 8. The FW update is finished and you can exit the TeSys Programmer or continue using the tool.



# Advanced Settings



## Logging and Reporting

### Reporting

TeSys Programmer supports report generation to help field services track job site progress and tracking by storing the file locally based on location defined in the Advanced Settings, as in the below figure. It will alert the user to start a new file when size increases to more than 1 MB.

Clear Report: to clear all the history reports.

### Logging

TeSys Programmer supports simple logging of console/debug messages in text format. The log file size must not exceed 10 MB, beyond which the file will discard the beginning of the file. It provides an option in Advanced Settings screen for user to open the log file and change the file location, as in the below figure.

There is an option for user to set the message detail level as: ALL – DEBUG – INFO – ERROR



## Optimized Mode (default)

Compares the Source FW Package and the Target Device Firmware of the Device & Network and upgrades the device to the selected FW package by only upgrading the microcontroller that does not match the package.

## Overwrite Mode

Upgrades both the device and network firmware to the Source Firmware Package by reflashing both FW regardless of existing version.



## Backup and Restore Feature

TeSys Programmer allows backup of complete LTMR configuration before start firmware upgrade and restore at end process over HMI port using Modbus serial communication protocol, when enabled (Default), as in the below figure.

### Backup and Restore Settings

- Enabled: Restore the device settings after firmware update (Default)  
 Disabled: Reset to factory default values

When Enabled, all Configuration Registers and Custom Logic will be backed up and then restored after the firmware upgrade.



**RSPSupply - 1-888-532-2706 - <https://www.RSPSupply.com>**  
See the product details here

Schneider Electric  
800 Federal Street  
Andover, MA 01810  
USA

888-778-2733

[www.schneider-electric.com](http://www.schneider-electric.com)

As standards, specifications, and design change from time to time,  
please ask for confirmation of the information given in this publication.

© 2018 – 2019 Schneider Electric. All rights reserved.

8536IB1915R12/19



**RSPSupply - 1-888-532-2706 - <https://www.RSPSupply.com>**  
**See the product details here**